



Marguerite Boatman



J. G. Hermans



E. M. Hardesty



N. W. Strinkowski



R. J. Fitzsimmons



C. A. Apriletti



O. L. Morris



Robert E. Wilkinson



Beverly Steidle



Floyd L. Bauer

## 1st Half Bowling Champs



Shown above are members of the "Eight Balls," the winning team in the MTPRA-sponsored Wednesday night Eau Gallie Bowling League. From left to right: Don Zimmerman, George Post, June Gugel, Bill Remaley and Ralph Gugel.

## Management Club Officers



Officers of the newly-formed management club at the Missile Test Project are shown left to right: Vice President P. J. Barnette, MTP Administrator; Sergeant-at-Arms N. W. Strinkowski, Manager of the Development Shop; Secretary Josephine Le Gault, Manager of the Computer Laboratory; Treasurer W. H. Hedden-dorf, Manager of Salary Administration; and President H. N. Morris, Manager of Data Processing Engineering.



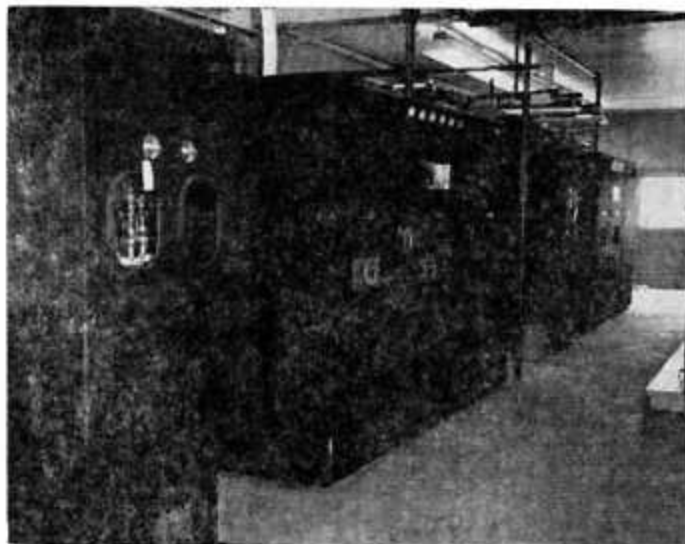
MTPRA Executive Committee members enjoy a luncheon prior to discussing employee recreational plans. From left to right (clockwise): Management Representative J. F. Thompson; Nils Hansen, representing RCA Yacht Club; H. C. Gulick, President, Rod and Gun Club; Management Representative R. G. Harker; Chester Knakiewicz, President, MTPRA Bowling Association; and W. A. Price, President, RCA Camera Club. Member Joseph Siegel was not present.



W. H. Spurgeon, engineer in Telemetry



This photograph shows RCA Missile Test Project employees at Ascension Island, terminal station on the 5000 mile Atlantic Missile Range.



Above at left: New remote control transmitters used by the Range Safety Officer to control or destroy missiles launched from Cape Canaveral, were recently installed at range stations. Right: Installation Engineer A. K. Pooley (left) and Cape Canaveral Resident Engineer Charles Gibbs inspect the new installation.



Five year Missile Test Project employees pose with Mr. McLaren and Mr. Conrad. From left to right: T. G. Dell, O. J. W. Christ, J. L. Nordbush, K. F. Clark, C. T. Powers, P. J. Barnette, K. M. McLaren, W. J. Shaw, A. L. Conrad, J. T. Hiles, K. R. Raulins, A. H. Menard, M. A. Lesh, E. Kociuba, A. C. Hodges and D. J. Birrel. Mrs. Virginia Wharton, also a 5 year MTP employee, was not present.

## \$20,000 Pledge

Pat Gandolfi and Beverly Steidle of the RCA Employee Combined Charities Committee present a pledge of \$20,000 to be paid over a period of three years, to Brevard Hospital Association Building Fund Chairman Harvey Huggins, Melbourne. The CC pledge is one of the largest pledges made during the hospital building campaign. Shown during the presentation are (left to right): George Soderquist, CC Committee; James Holmes, Melbourne, James Carr, CC Committee; Harry Underhill, Melbourne, Don Zimmerman, CC Committee; Mr. Huggins; Leo Bernardini, CC Committee; Mrs. Gandolfi; Joseph Siegel, CC Committee; Mrs. Steidle; R. A. Howell, CC Committee; Nell Hathaway, CC Committee; Pat Knecht, CC Committee; and Ray Harker, CC Committee.







RCA managers pose during the Range Instrumentation Managers' Conference at Eleuthera's French Leave Hotel. From left to right: (kneeling) K. L. Garst, Manager, St. Lucia Instrumentation; W. J. Tubell, Manager, Puerto Rico Instrumentation; R. D. Phillips, Manager, Range Stations, Area C; A. P. Wark, Administrator, Supply Coordination; V. R. Harris, Ship Instrumentation, Trinidad; J. J. Facker, Manager, Grand Turk Instrumentation; M. A. Ringo, Manager, Fernando de Noronha Instrumentation; J. Koprowski, Manager, San Salvador Instrumentation; and D. T. Donaldson, Manager, GBI Instrumentation. (Standing) K. R. Raulins, Manager, Range Instrumentation Stations; W. D. Gould, Manager, Field Instrumentation; W. G. Kolter, Manager, Ship Instrumentation, Recife; K. M. McLaren, Vice President, Missile Test Project; E. L. Wilford, Manager, Antigua Instrumentation; W. R. Cole, Manager, Project Accounting; A. L. Conrad, Vice President, Government Service, RCA Service Company; J. W. Van Cleve, Manager, Range Stations, Area A; B. A. Ryan, Manager, Range Stations, Area B; L. C. Machen, Manager, Mayaguana Communications; J. M. Kaeser, Manager, Range Support; J. S. Judson, Manager, Eleuthera Instrumentation; and R. F. Knipmeyer, Manager, Data Processing.



The appointment of Harold N. Morris as Manager of Data Processing was announced recently.



Program Management managers R. M. Barnes (left), PAA, and D. R. Hill, RCA, during discussion in Mr. Hill's office.

## Bowlers In State Tourney

A team of leading RCA bowlers will compete in the Florida ABC Bowling Tournament in St. Petersburg during May. The team, sponsored in the tourney by the MTPRA, will include Clarence Danyew, Glen Amel, Chet Knox, Elmo Hardesty and Ed Korona.

## Large Crowd At Dance

Almost 500 were in attendance at the MTPRA sponsored September Dance at the New Cocoa Armory, Saturday night, September 20.



James M. Hyndman (left), Manager of RCA Missile Test Project Employment and Salary Administration and Employment Manager Harold D. Storz stand before a large map of the United States used for planning recruiting trips.



Photographic Standards technician J. J. Ondera tests film samples on a sensitometer.



R. G. HARKER



JACK SIMPSON



MARIE CHELSON



A. H. LAVENDER



E. O. DREW



Dr. C. L. Carroll



Dr. N. D. Mallory



E. T. Hatcher



R. P. Graeber



F. P. Stoklas.



Edward J. Lauden



A. E. Hoffman-Heyden



J. F. Thompson



Duane C. Brown



Dan Neel



The RCA Softball Team includes (front row): Richard Pollette, Richard Brownell, Richard Turnbow, Thomas Hindley, Eugene Deem and Les Rudy. (Back row) Mak Mannen, David Mannen, Michael Quinn, Bruce Flickinger, Ray Boehmer, Bruce Coram and Carlyle Stevenson. Not pictured are Ken Beman, Autrey Moore and Bruce Glass.



Newly elected officers of the RCA Management Club pose near the AFMTC Technical Laboratory. Left to right: John A. Hardos, Manager of Cost Accounting, Treasurer; William J. Dillon, Manager of Army Missile Programs, Member of Board of Control; Edward Sears, Manager of Data Support, B. Shift, Cape Canaveral, Member of Board of Control; Robert E. Wilkinson, Manager of Data Plans Publications, Vice President; James M. Hyndman, Manager of Employment and Salary Administration, Member Board of Control; James W. Falkenstein, Manager of Range Operations Range Support, President; William G. Kolter, Manager of Maintenance Control, Sergeant at Arms; Melvin L. Smith, Manager of Contract Administration and Budgets, Member of Board of Control; Gaver M. Powers, Manager of Photographic Laboratory, Member of Board of Control; and Bernard A. Ryan, Administrator, Range Instrumentation, Cape Canaveral, Secretary. Earl T. Hatcher, Manager of Data Translation Engineering, a member of the Board of Control, was not present for the photograph.





Participants in a recently completed course on the operation and maintenance of RCA AN/FPS 16 radars conducted at San Salvador pose with the Technical Training Instructor who conducted the training program. Shown in the front row (left to right): Egon Van Megen, W. M. Callaway, D. K. Myers, D. S. Irvin, R. L. Hartman, Gerald Wiss, P. J. Carlson and Technical Training Instructor C. E. Anderson. Back row: R. K. Suter, R. C. Haas, M. F. Kimrey, C. O. Brown, R. T. Barker, D. H. Bicksler, W. R. Wilson, B. H. Morefield, Clifford Plumb, J. G. Shields, R. P. Siebert and M. J. Collins. J. P. Ring, who also completed the course was not present for the photo. The photo was snapped in front of San Salvador's Reef Club.

### Gala Hobo Ball Drew Large Crowd



These are not hoboes. They are MTPRA members having a hilarious time at the Hobo Ball. Waiting for the lighter (upper left) to reach his cigar is Gene Meindl of Instrumentation Control. Laughing Ann Millikan also of Instrumentation Control, wonders if the flame will reach his cigar before it reaches his nose.—Photo by S. Lane Atkinson, Jr.

Below: M. J. Shaara, senior accountant, PAA Guided Missiles Range Division and member of the Brevard United Appeal Board, accepts a \$2,500 check from RCA Employees Combined Charities member Pat Knecht. The check was the third payment on a \$10,000 CC pledge to the 1959 UA fund.





C. R. SCOTT



DR. C. W. BEMISS



H. A. ROLOFF



E. H. BROOME



J. P. SHARKEY



L. F. DODSON



Nils Hanson



Dr. Douglas Duke

## Stumps TV Panel

The appearance of RCA employee Helen Mann on CBS-TV's "What's My Line?" on February 15 is said to have stimulated more nationwide interest in science than has been exhibited since the first ICBM was launched.

Introduced to the CBS Sunday night audience with a statement that she "tracks missiles at Cape Canaveral"—actually she is a programmer for IBM 709 computers used in RCA Data Processing—the beautiful blonde's occupation was not guessed by the panel.

Panelists Martin Gable, Arlene Francis, Robert Cummings and Dorothy Kilgallen did not even approach a correct guess. When moderator John Daly announced, after all questioners had failed, that "she is a lady scientist, with BS and MS degrees in mathematics and physics, who works for the Radio Corporation of America," every panelist expressed amazement.



RCA Rod and Gun Club member Edward Evans displays a 7 lb., 3 oz. trout he recently landed. East Florida's Indian and Banana Rivers are favorite fishing areas for hundreds of RCA employees.





This group picture of managers, engineers and clerical personnel of RCA Communications Engineering was photographed recently at the AFMTC Technical Laboratory. Shown (left to right) front row: H. J. Bowes, Manager of Communications Engineering Programming; C. B. Eaton, Dorothy Ayres, C. E. Plimpton, Manager of Wire Engineering; T. J. Tully, Manager of Communications Engineering; H. C. Cox, Manager of Radio Engineering; Christine Bell, Dorothy Pooley, Betty Kolter, and T. A. Eason. Second row: Marjorie Caghey, R. G. Schild, C. F. Cole, Elizabeth Greene, J. P. Collins, E. M. George, E. M. Owen, H. N. Sturdivant, and J. R. Totty. Third row: G. J. Elzas, R. R. Wood, E. H. Chestnut, Anne Wells, Marcelleen Rades, R. R. Connelly, Igor Shem, W. E. Aldrich, A. A. Queen, W. M. Hazel, K. G. Fairfield, and J. E. Gilmore. Fourth row: Thelma Queen, K. A. Raup, W. T. Pease, R. E. Werner, J. A. Kozusko, and R. J. Johnson. Back row: W. S. Fincher, H. E. Hodge, M. C. Koenig, H. G. Blackwood, E. P. Eckhart, G. G. Baumbach, A. A. Longos, J. D. Slayton, C. E. Laibl, and F. B. Buckholtz. Employees C. A. Apriletti, F. B. Morris, L. B. Farabee, A. M. Waits and T. S. Coulbourne were not present for the photograph.

## Club President

Betty Murkshe, secretary to H. N. Morris, Manager of RCA Data Processing, was recently honored as she was elected president of the Business and Professional Women's Club of Cocoa Beach.

A native of Ohio, she was employed by Land Air, Inc., and as a civil service stenographer at Holoman AFB prior to joining the RCA Missile Test Project in June, 1954.

She has served in stenographic and secretarial positions in Range Engineering and Data Processing since that time. Her husband, R. P. Murkshe, is Manager of Cape Optics, B Shift.



MRS. MURKSHE



—Photo by Special  
Top women bowlers of RCA mixed Bowling Leagues at Cocoa Beach, Patrick AFB and Eau Gallie competed in the Florida State Women's Bowling Tournament in Tampa. Though they did not win awards in the tournament, they were high in final standings. Shown (left to right) are Melba Roberts, Eleanore Wolfe, Elizabeth Schneider, Pat Knecht and Irma Garrison.

## A FAMILY SALES STORE SERVES RCA EMPLOYEES



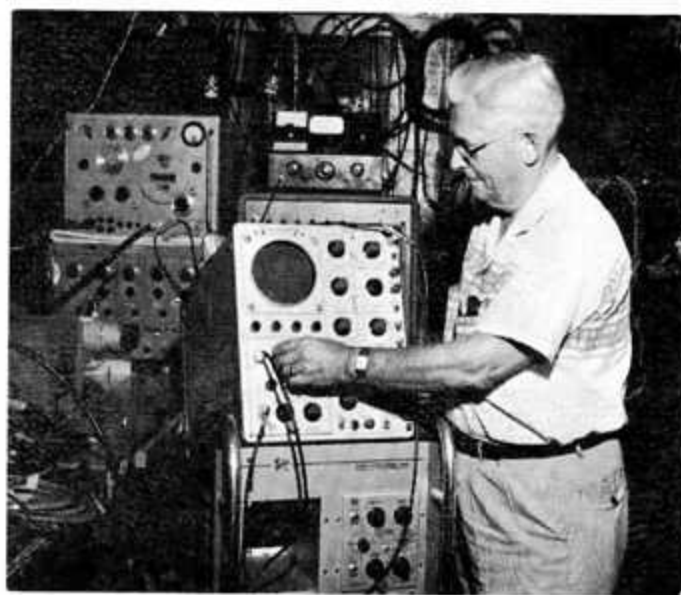
Located at 70 South Orlando Avenue, Cocoa Beach,



RCA photographer M. E. Thomas



Driving up a volcanic mountain at Ascension Island to obtain photographic coverage of the base area is RCA photographer Anton Vestby. An employee at the Missile Test Project since 1954 and a still cameraman since 1955, Vestby has documented many important Air Force Missile Test Center events at Cape Canaveral, at down range stations, and aboard AFMTC ocean range vessels.



Harry B. Lyons, who will retire on the last day of this month after 34 years as an RCA employee, is shown at work in the Development Laboratory. Here he prepares to use an oscilloscope to check the operation of an electronic system.