

The beaches alone at each station would make it a paradise for anyone who enjoyed the water. Water sports, particularly skin diving and snorkeling provided a major source of recreation. But others enjoyed the beaches for sunbathing and the waters for fishing and boating. Listening to stereo and short wave radio was a popular past time at most of the islands or you could take a side trip to one of the neighboring islands for a change of scenery.

The men and women at each station came in at all ages, sizes and backgrounds but all eager to sock away some downrange pay. The majority had left their families at home which might be anywhere from Cocoa Beach to New York City to San Francisco. They were able to come home for a week every three months or a full month every year.

Living quarters usually resembled medium-priced motel rooms. Usually two people to a room and four sharing one bathroom.

The cafeterias always served good food (and plenty of it). - Fresh fruits, vegetables and meats with plenty to drink. When you entered the mess hall, you were entering a gourmet's paradise.

Each base had a Club that was popular for rest, relaxation, fun, games, comradeship and plenty of cold beer to drink. Bingo was popular and everybody enjoyed the outdoor movies that were shown every night. For nighttime entertainment everyone usually came to the Club, watched the movie or drove to one of the resort hotels scattered around the islands.

The Downrange Rats play hard but they also work even harder. Most of them work a regular 40 hour week unless there is a "test" which requires extra hours, which happens often. But when there are no launches in progress, the sophisticated instrumentation equipment requires a tremendous amount of testing and periodic maintenance to keep it operational for test support. Their work is never done.

Range Tracking Stations

Station 0	Patrick AFB
Station 1	Cape Canaveral
Station 19	Kennedy Space Center
Station 2	Jupiter/JDMTA
Station 3	GBI & Cays
Station 4	Eleuthera
Station 5	San Salvador
Station 6	Mayaguana
Station 7	Grand Turk
Station 8	Dominican Republic
Station 92	San Juan, P. R.
Station 9	Mayaguez
Station 9.1	Antigua
Station 10	St. Lucia
Station 40	Trinidad
Station 11	Fernando De Noronha
Station 12	Ascension
Station 13	Pretoria
Station 89	Mahe

1957



The Mayaguana management staff is shown above (left to right); J. W. VanCleve, Manager, Instrumentation; S. F. Hodson, Manager, Communications; A. W. Long, Manager, Radar; W. R. Bozardt, Manager, Timing and Telemetry. Van Cleve is no longer at Mayaguana, having since been transferred to Puerto Rico as Instrumentation Manager.



San Salvador management personnel are shown above (left to right): J. N. Young, Manager, Timing and Telemetry; J. G. Hermans, Manager, Radar; F. C. Beake, Jr., Manager, Instrumentation; C. O. Thomas, Manager, Communications.



Eleuthera management personnel are shown above (left to right): Sam McCoy, Cotar Engineering; Everett James, Manager, Radar; Dave Donaldson, Manager, Instrumentation; Don Gray, Manager, Timing and Telemetry; Wally Tubell, Manager, Communications; James Scheelar, Cotar engineer. Donaldson and Tubell have since been appointed Instrumentation Managers of Antigua and Grand Turk respectively.



The Grand Turk management staff is shown above (left to right): W. H. Marshall, Jr., Manager, Timing and Telemetry; E. B. Ray, Manager, Radar; Hugh Edwards, Manager, Communications; J. F. Zender, Manager, Instrumentation.



St. Lucia management personnel are shown above (left to right): J. S. Judson, Manager, Timing and Telemetry; H. S. Westerlund, Manager, Instrumentation, and W. D. May, Manager, Radar. Judson has since been promoted to Eleuthera Instrumentation Manager, and Westerlund has been assigned to Ascension Island as Instrumentation Manager.



Dominican Republic Instrumentation Station staff personnel are shown above (left to right): L. S. Perry, Manager, Radar; J. J. Facker, Manager, Instrumentation; J. Lawson, Manager, Communications. Facker has since been appointed Instrumentation Manager at Mayaguana.



Members of Mayaguana's RCA softball team are shown above (left to right): First row: Woody Bozardt, John Biggs, Bob Coyne, George Rhyne; Second row: Bob Doane, Duke Snyder, Curt Evans, Carl Winkenhof, Bert Berthelsen; Third row: Doc Ski, Andy Long and Boyd Renner. The team boasts of a record of 4 losses against PAA. However three of the games were very close and the fourth game was halted by rain at the end of the third inning with the Rats ahead 3 to 0.



Shown above is Allen Aden with a prize barracuda bagged by him at San Salvador in April. The fish weighed 35 pounds and was 60 inches in length.



Puerto Rico management staff members are shown above (left to right); R. L. Barringer, Manager, Radar; N. C. Tucker, Manager, Timing and Telemetry; B. A. Ryan, Manager, Instrumentation; D. G. Raymond, Manager, Range Area, and L. D. Creech, Manager, Communications. Ryan has superseded Raymond as Manager, Range Area.



RCA personnel are shown at work in the newly completed Communications Center on Ascension Island. From left to right: J. F. D'Ambrosio, A. H. McDowell, L. D. Creech, and L. L. Smith.



J. H. Cave at work in Sub-Cable. Mayaguez, 1960

1958

1959



RCA down range instrumentation managers pose with representatives of RCA Range Operations management during their recent conference at Patrick Air Force Base. Shown above are: Front row (left to right): P. M. Gluchowsky, Recife; H. S. Westerlund, Ascension; W. D. Gould, Manager, RCA Field Instrumentation; R. D. Phillips, Eleuthera; D. T. Donaldson, GBI; and K. R. Raulins, Manager of RCA Range Instrumentation Stations. Back row: J. S. Judson, Fernando de Noronha; J. W. Falkenstein, Manager of RCA Cape Canaveral Instrumentation; J. J. Facker, Grand Turk; A. P. Wark, Administrator of RCA Supply Coordination; W. R. Bozardt, San Salvador; M. A. Ringo, Administrator of Range Instrumentation; E. L. Wilford, Mayaguez; J. S. Koprowski, Antigua; L. C. Machen, Trinidad; and C. T. Powers, Manager of RCA Range Operations.

Below: M. P. Kennedy, Manager of RCA Instrumentation at Pretoria monitors instrumentation performance at the master console during an operation.

1962



After a long, hard day on the job, nothing refreshes like the congenial atmosphere of GBI's Club Rendezvous.



1962



Ascension Auxiliary Air Force Base, dominated by Southwest Bay Red Hill (center) and Command Hill (right). Red Hill, topped by an FPS-16 calibration building, consists of 40% iron ore. Its rust-hued soil can actually be picked up by a magnet. In the distance beyond Red Hill is the cloud-capped crest of 2,817-foot Green Mountain.

1964



Slim Condon, MTP technician on the San Salvador Giotrac, at the console.



MTP Technicians Bill Cox (left) and Sam Randall check out the San Salvador Giotrac equipment.

1964



Shows installing the Ascension Island command control system that will be utilized on the next Saturn Launch, SA-6, are MTP personnel (from left) Harry Beatty, Sam Coble, Jackie Murphy, Stedman Chase and Russ Forsyth. SA-6 will orbit a "boiler plate" version of the Apollo spacecraft.



1965

Turk Instrumentation Manager
Les Waddill.



the base: dining hall right, dormitories left

1966



Shown above is the Trinidad Test Site Women's Softball Team which recently won the Navy Women's Softball League championship at Chaguaramas, Trinidad. The squad consists of wives of RCA personnel on Trinidad plus dependents of two Pan Am personnel. In the front row are Delores Thomas, Glenda Hoops, Maurice McKinney, Lizette Parks, Mary Lee

Schnitzer. Center — Joyce Norton and Vilma Dudley. Back row—Arnie Harkins, Manager; Holly Potter, Bonnie Pfeilsticker, Mary Sinclair, Hilda Bohannon, Gerry Hardman, Virginia Young, Shirley Dunham, Larry Pfeilsticker, Assistant Manager. Members not shown are Claire Brooks, Rita Thomas, Dorothy Medweddeff, Irene Welch and Jean Brakewood.

1967



Larry Springer stands in tropical setting. Bamboo forest grows atop Green Mountain, 2,800 ft. above sea level.



VOL. ONE, No. 2

RCA Service Co., Inc.

April, 1954

GREETINGS

The RCA Missile Test Project is now entering its sixth month of operation. During the past formative months, many of us have been so engaged with current activities and problems that there has been very little time to get to know each other well.

Because of this, I have great hopes that the MTP News will serve to bring all of us closer together by reporting items of general interest about the people who comprise the RCA "family" here at Patrick and at the Range Stations. It is intended that this be a local paper about local people. Other company publications cover news items of wider interest. So let's all get behind OUR paper by passing to its editor news that will help us know each member of our team.

A. L. CONRAD

FROM ED, THE EDITOR.....

Today marks the appearance of the first issue of the RCA-MTP News. We have tried to make it as interesting and accurate as we could. We know that some errors must have crept in, but let us hope that they are not big ones. We hope you will like the name of our new paper, and especially our missile which goes shooting across the masthead—real crazy,

EDITOR

we think. It's the result of a lot of thought between the editor and Elaine Kessler, that attractive young artist down in the Photo Lab. Next month, when we have recovered from laughing at them, we hope to show you some of Elaine's cartoons. Also, we want to urge you to feed any and all news to your reporters -- if you don't know who they are, either call your supervisor or us, here in Training and Services, Extension 31-106.

So long for now. We'll be seeing you again with our second issue around the first of May.

RCA-MTP NEWS

EDITOR*****ED BASS, 31-106
ARTIST*****E. KESSLER, 24-188

REPORTERS

RANGE OPERATIONS*****

Phyllis Francis, 31-170
Carol Moore, 23-259
Eileen LaMont, 24-217

SYSTEMS ENGINEERING*****

Cora Keeler, 22-162
Celia Fournier, 24-129
Beverly Heinz, 22-282
Naomi Cheaney, 23-145
Sunny Thurman, 23-229
Vivian Greenwood, 23-143



NEW MTP DECALS

MISSILE TEST PROJECT
GOVERNMENT SERVICE DEPARTMENT
RCA SERVICE COMPANY, INC.

A RADIO CORPORATION OF AMERICA SUBSIDIARY



Shown above is a picture of one of the new Missile Test Project decals distributed to RCA employees at Patrick Air Force Base, Cape Canaveral and the Down Range Stations during October. The letters "MTP" and circle are red on a white background while the missile is blue. The wording (lower right) is white on a blue background and the RCA insignia is red with white letters.

Replacements may be obtained from Training and Services, Building 560-1.



RCA Softball Team members are photographed during their organization meeting Friday, February 11. Front row: Chet Knox, Pulse Radar; Dick Burnelle, Electronics Shop; Al Angy, Development Lab. Second row: Bill Flanagan, Optics; Leo Cooney, Property Control; Jake Brodsky, Training and Services, Manager; Don Chalifour, Optics, Field Captain. Back row: Charlie Mifsud, Data Reduction; Dick Roberts, Electronics Shop; Bruce Glass, Data Reduction; and Andy Hayman, Range Implementation.

1956



The Missile Test Project Employment Office in the Havenaire Building, New Haven Avenue, Melbourne.



KENNETH RAULINS



W. T. A. BAXTER
PERSONNEL MANAGER

200 Attend 1st MTPRA Dance

Approximately 100 couples attended the MTPRA Valentine Dance at the Patrick AFB Officers Club, Friday evening, February 10.

The Valentine Dance, the first one sponsored by the MTPRA, featured music by the Silhouettes. MTPRA Members and their wives or dates were admitted free.



Marjorie Beal, Secretary to Range Instrumentation Stations Manager K. R. Raulins.



Harry K. Siler, Engineer Trajectory Computers and Recorders Engineering



Range Implementation employees, photographed kneeling on a sandy beach during temporary duty at Eleuthera, are (left to right): Floyd Rinehart, Ernest Peghiny and Jim McDonough; and standing: Ken Heddens and Bob Blair. Among the points of interest they visited during their TDY was Eleuthera's famous Rock Sound Club.

Boat Club Officers



Officers of the newly elected RCA Boat Club pose for a MTP NEWS photographer. From left to right (front): Ralph Paz, Vice Commodore, Cocoa-Rockledge area; and John Jungermann, Commodore of the Boat Club. (Rear) Jack Piszczek, Vice Commodore, Melbourne-Eau Gallie area; Paul Barnette, Secretary; and Ray Harper, Treasurer.



Charles K. Pooley, Repairman in the Electronics Shop



"Jack" Richardson Admin Contract Interpretation and Procedures at MTP.



Joseph M. Kaeser, newly appointed Manager of MTP Field Instrumentation.



San Salvador Instrumentation Manager, Fred Bealke, left, and Supply Coordination Analyst Irving Wasserberg discuss "bench kit" problems during Wasserberg's recent visit to San Salvador.



Engineer Reuel T. Platt, Jr., of Optics Engineering



Phyllis Francis, Combined Charities solicitor in Communications Engineering.



HARRY F. DUTTONHAVER

We'll Work Here In The Future



An artist's sketch of the new Guided Missile Technical Laboratories now under construction at Patrick AFB is shown above. The present Technical Laboratory, now occupied by many RCA personnel, will be the south wing of the completed Technical Laboratory.

Upon completion of the building program most Missile Test Project engineering and technical personnel will be working in some of the world's finest laboratories.



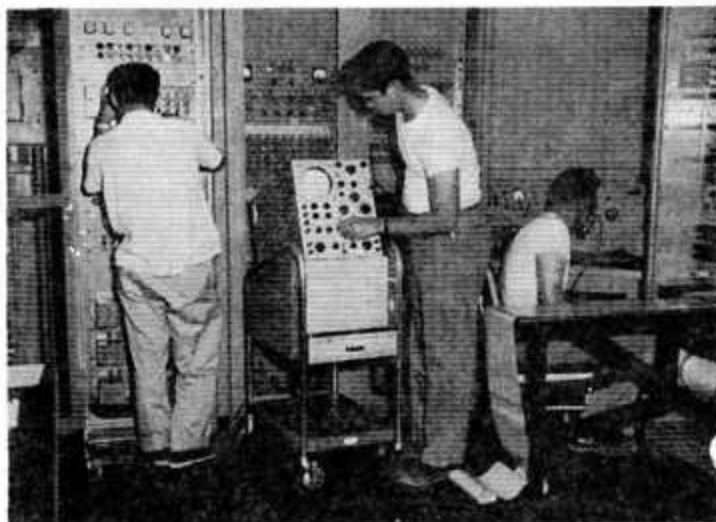
SAM F. KENNEDY



JOSEPH SIEGEL



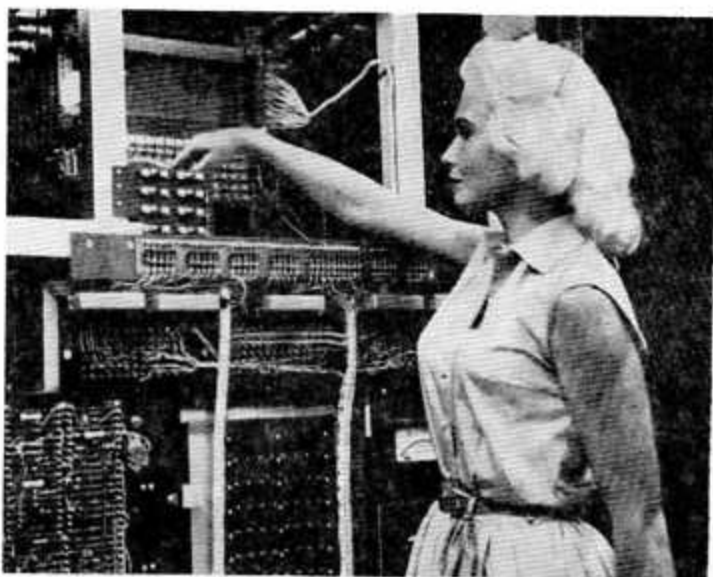
Wayne D. Gould, Range Stations Area Manager, receives the RCA Service Award from S. D. Heller, Manager of Range Operations, in recognition of his completion of ten years of employment with RCA. From left to right: S. D. Heller, Wayne Gould, and A. L. Conrad, Vice President, Missile Test Project.



Technicians John Young (left, back to camera), James Wallace (center), and Lloyd Weisner are shown operating timing equipment in the Eleuthera Central Control Building. RCA technicians operate and maintain timing and other instrumentation equipment on all Down Range stations.



GBI skindivers pose with their fish after a weekend outing. From left to right: Doc Hoffman, PAA; Bob Arnsdorff, MTP Communications; Ben LaRoche, Pete Kubala and Gene Albrite, PAA.



Pretty Helen Mann, electronic computer programmer in Data Processing is shown operating a FLAC computer. After receiving her BA in Mathematics and Physics at Emmanuel College, she received her MS in Physics at the University of Miami and studied at Boston University.



Top: K. J. Martin (left), Manager of Technical Training, talks over a progress report with engineering trainee Dwight Spencer.



Top: W. H. Brinkman, C. P. Baumann and J. P. Newey listen to a classroom explanation by instructor Robert Ginn.



M. W. Boggs, and C. P. Baumann, talk over work requirements with Fred Horschler (right), a supervisor in Test Operations Analysis of Range Operations.



C. T. POWERS



R. V. GODFREY



(left to right) D. L. Benne, L. L. Tribbey, R. J. Theodore, M. E. Smiegal and J. R. Sandlin study the control panel of the FLAC computer in the Technical Laboratory.